



COMPANY
PROFILE



**ADVANCED
ENGINEERING**

CONTRACTING EST

مؤسسة الهندسة المتطورة للمقاولات العامة



OUR VISION

To be recognized as the preferred quality
MEP and Contracting, supplier having
Modern facilities and equipment
Profound expertise
Strategic partnerships
Customer oriented workforce

“Every great achievement was once considered Impossible
ADVANCED ENGINEERING is dedicated to safely functioning the
Highest quality MEP products and contracts for our customer.
Delivering them on-time and providing them with outstanding
Service. It is our intention to operate ethically with all constituents,
Maintaining fair and honest Relationships”



OUR MISSION

Our Vision is to be recognized as the preferred quality MEP Contractor
and the structural steel supplier with its modern facilities and equipment's,
profound expertise and customer-oriented workforce.

It's our intention that this letter should serve as our commitment to serve your
esteemed organization on the current projects and also on any of your future
requirements of MEP works.

With Warm Regards
Bahjat Y. Kalantan

Introduction

This is a Saudi business establishment which has been successfully managed with the trading & contracting activities for over 15 years having Commercial Registration No (C.R) is 4030471316, Chamber of Commerce Registration. Our organization consist of various specialized groups of dedicated, capable and well trained professionals who are well coordinated and organized to provide the best services and to achieve the highest quality works for the absolute satisfaction of our customers in the field of trading and Contracting.

Company Profile

This is a contracting co. Established in the year of Oct 2008, located in the Khumra area, near warehouse city of Jeddah, Saudi Arabia. Our qualified fabrication and Welding crew has over 20 years of experiences in the different parts of the world. We have a full crew of structural fabricators, Lathe workes and welders with rigs. Works All this give us the skills, experience and abilities to get your project done at Right Time & Quality Against the toughest specifications.





OUR HISTORY

ADVANCED ENGINEERING is a leading contracting and support services firm having over 15 years experience in the construction and industrial field of Western province of Saudi Arabia. ADVANCED ENGINEERING fabrication shops have been established in the year of 2008 and have the knowledge and expertise to offer unmatched levels of skilled workforce in this specialized industry. Our workforce team strength is about 50 skilled employees including 3 engineers and 6 fabrication technicians. We started our hiring services of skilled and unskilled workforce to prestigious projects in the Kingdom of Saudi Arabia. This division of our firm is still a major part of our operations which has flourished and grown over the years. Our engineers and technicians are predominantly Asians who collectively have wide spectrum of experience in all disciplines. We would be pleased to consider as the subcontractor for any works covered by our expertise which has been mainly covered in the building sector and petrochemical industries. Our project engineers have extensive knowledge of client contractor relationships and are fastidious in their professions.

OUR SERVICES

Our factory has an existing covered area of 650 m² and 350 m² uncovered has a fabrication facility of 200 tons per month. We are planning to hire another land to expand our fabrication facility to the maximum of 300 tons in the near future.

Steel Structural Fabrication - Steel Works

Supply, detaining, fabrication, treatment and erection of all kinds of steel structures, pipe racks, process structures, built up plate girders, ware houses, EOT cranes, storage tanks, vessels, ducts, canopies, silos, grating, handrails, ladders, stairs etc

Fabrication Works

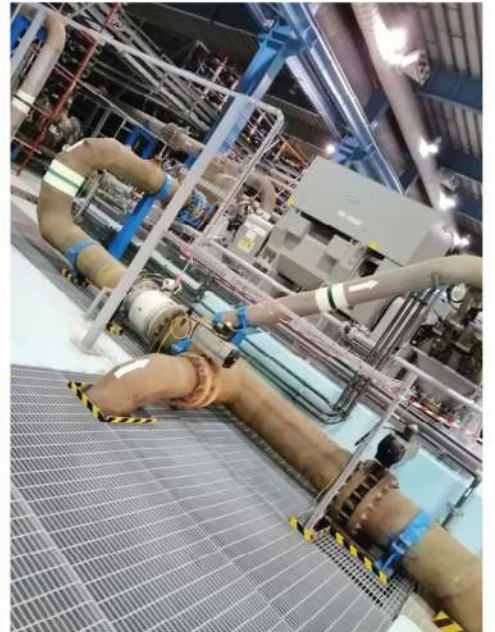
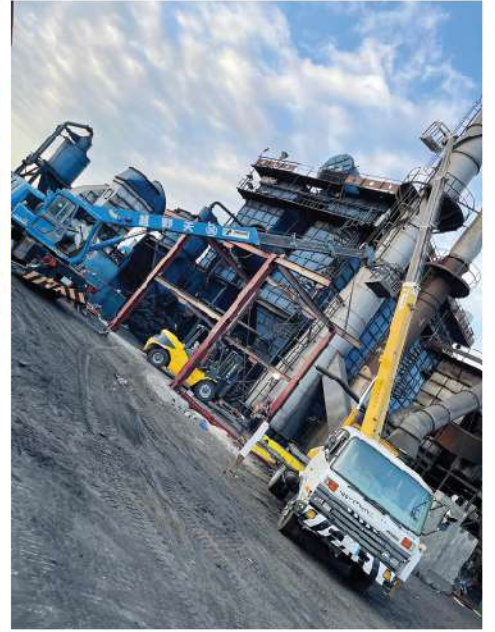
We do fabricate for factories, cold stores, warehouses, process plants, power & desalination plants, petrochemical plants, cement plants etc. Our teams perform fabrication and installation of fuel tanks with platforms, barges, pontoons, floating cranes, floating quays, jack up Piers and other floating structures. ADVANCED ENGINEERING will perform fabrication and installation of vessels & Piping.



photo gallery



photo gallery





Expertise and Specialization

Fabrication of Duct, Chute, Hopper, Bin, Reducer And Bends as plate works.

Fabrication of Truss, Purling, Beam, Column and stock file sheds and conveyors, Tower as structural work.

Laying work of pipe line for various sizes in Gas line, Oil line and Lubrication system

Laying conveyor belt and vulcanizing

Erection of fabricated items

Erection of All plant Machineries Viz, Cement, Sugar, Atomic Thermal Hydro Power, Steel sponge and Pellet ,Iron, Fertilizer, Chemical, Paint, Powder Coating, Refineries, Aluminum etc.

Commissioning of all above plants

Roof Sheeting of plant and sheds

Supplying of skilled and Technicians to plants.

Maintenance jobs of running plants

All Type of motor rewinding

All Type of Overhead Crane Maintenance

Repair & Maintenance of Heavy Machineries and Equipment

Overlay & Hard Facing Job for Industries

Lathe machine works, milling machine & all types of gear work.

All types of chrome plating, gold plating and hot dip galvanizing.

All types of hydraulic works



No.	Description	Capacity
1	Plate Rolling machine	20 mm x 3 M
2	Plate Shearing Machine	10 m ³ M
3	Plate Bending Machine	06 mm x 2.5M
4	Circular Saw 1.4m	800 mm
5	Disc Cutting Machines	40 mm
6	Oxy-acetylene Cutting Machines	4 Pcs
7	Welding Machines	100 mm
8	Spot Welding Machine	500 A (ea)
9	Threading Machine	100 A
10	Radial Drilling Machine	50 mm
11	Magnetic Drilling Machine	65 mm
12	Magnetic Broach	40 mm
13	Bar Bender	30 mm
14	Pneumatic Drilling Machine	35 mm
15	Disc Grinding Machine	30 mm
16	Painting Equipments	4 Pcs
17	Hoist Crane	03 Ton
18	Compressor	250 cfm (ea)
19	Pug Cutting Machine	50 mm
20	Chain Blocks	5 Tons



Our Major Clients & Projects

Advance Formwork co Ltd (DOKA) - (Structural Works)

Jotun Paint Company - (Jeddah, Riyadh, Dammam, Yanbu, Khamis Mushait)

Abdul Latif Jameel Toyota - Jeddah

Binzagar Uniliver Company - Jeddah

Euro Design, Jeddah (Structural Meezanain, Hamptons) - Jeddah

Hill Metal Company - Jeddah

Alesayi Beverages Co - Jeddah (Platform Fabrication and Erection for their Factory)

Western Bakery - Jeddah (Fabrication and Erection Cooling Tower, AC Frames and Equipment Support)

Tekfen Saudi Arabia Ltd – Rabigh (Plates Fabrication for ARAMCO)

Hidada Saudi Arabia Ltd - Jeddah (Hand Rails Fabrication for ARAMCO)

Al Kawther Company - Jeddah (Handrails Fabrication for ARAMCO)

National Builders - Jeddah (Duct Fabrication)

Global and aqua company - Riyadh (Tank fabrication and erection in Jizan)

United Sugar Company - Jeddah (Boiler Economizer – Fabrication and Installation, Jeddah)

Saudi Binladin Group - Al Haram, Makkah (Escalator structure, glading fabrication and erection)

Red Sea Marina (Off-Shore) - Jeddah (Pontoon Making and Maintenance)

Saudi Electromechanical & Technical Associates Company Ltd - Jeddah (Fire Fighting, Al Khayal Project)

National Biscuits - Jeddah (Plant Expansion and Heavy platform for equipment installation)

Surayayi carpet Company - Jeddah (Latex chemical S.S,tank 25000lt hoppers & drainage systems)

Nesma contracting company, King Abdullah University - (Duplex Stainless steel - pipeline and seating works)

Company Profile

Office Address	Al Huwaish Center, Al Madinah Munawarah Road Jeddah, KSA, First Floor- Office : 7
Contact Number	+966 55 552 6825
E-mail	info@advancedengco.com
Website	www.advancedengco.com
Foundation Date	2008
Legal Status	100% Saudi Owned Company

Name of the Office Bearers

Name	Contact Number	E-Mail
Bahajat Yousuff	055 5526825	bahjat@advancedengco.com
Hafiz Imtiaz	0538648081	imtiaz@advancedengco.com
Mohammed Sarfraz	0507228976	sarfraz@advancedengco.com
Adil. Chelakkot	0533041724	adil@advancedengco.com

Registration/ Licenses

Commercial License No.:	4030471316
-------------------------	------------

Bank References

Saudi National Bank (A/C)	01400011757200
Saudi National Bank (IBAN)	SA2010000001400011757200

الأعمال الإنشائية والحدادة | الأعمال الهندسية الكهربائية و الميكانيكية واللحام
خطوط الأنابيب | لف المواطير | جميع أعمال الخراطة و تشكيل المعادن
تقطيع وثنى المعادن و الفولاذ

Steel Fabrication | Structural Works with Erection & Installation
Total MEP works Pipeline Welding | Motor winding | Lathe works
Metal forming | Steel Cutting and Bending



ADVANCED
ENGINEERING

CONTRACTING EST

مؤسسة الهندسة المتطورة للمقاولات العامة

